

Putting theory into practice isn't always easy. To help, the College of General Studies at University of Phoenix recently identified practices that faculty can implement to cultivate empathy in their classrooms:

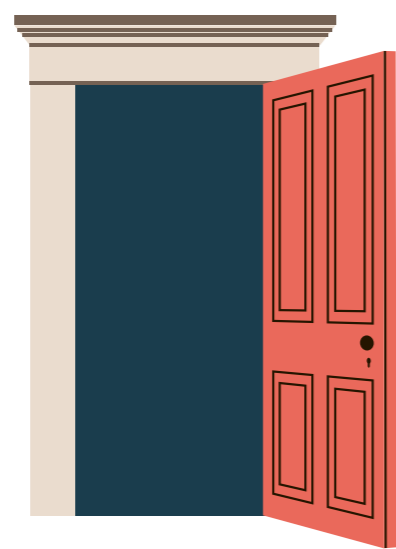


SUPPORT

Meet students where they are by providing individualized support and instruction.

OPENNESS

Maintain an open-door policy where students can reach out to discuss feedback or course topics.

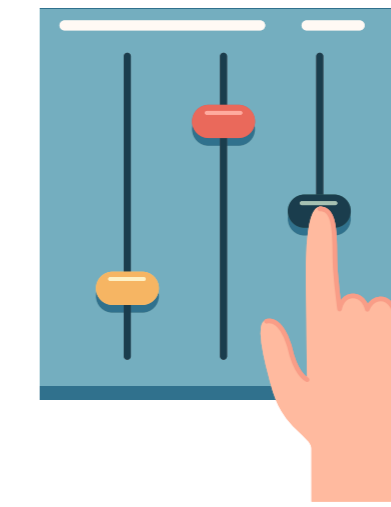


AUTHENTICITY

Use authentic language while teaching.

COMPASSION

Use compassionate and sensitive language when students struggle.



VULNERABILITY

Express appropriate levels of vulnerability.



THANKFULNESS

Thank students when they share their own lived experiences.